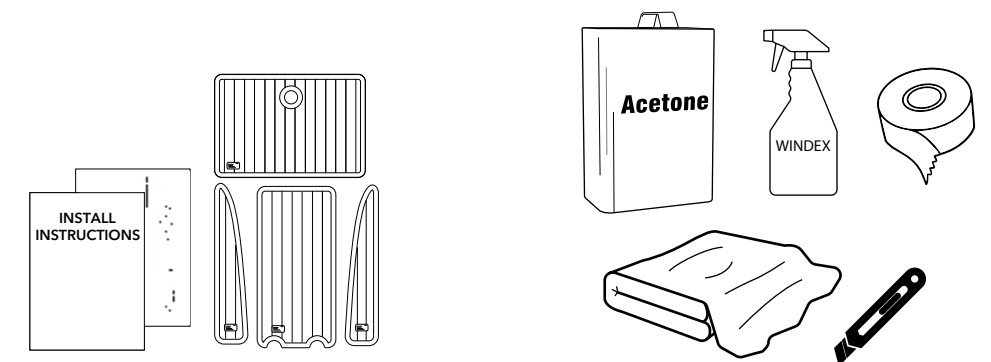


HOW TO INSTALL LIKE A PRO



1

Gather Supplies



Product Package Contents

- Labeled panels
- Install instructions
- Install plan
- Unpacking, care, and storage page

Needed Tools

- Acetone
- Masking Tape
- Windex
- Utility knife (optional)
- Rag

2



Clean surface with acetone and rag

3



Clean surface a second time with Windex

4



Verify fit and exact location



Scoreline down the center



Ensure line is completely cut and then fold back inward



Tape one side down in exact location



Lift opposing side and remove the liner



Apply downward pressure from the center working your way outward

5



Ensure the pad is firmly bonded

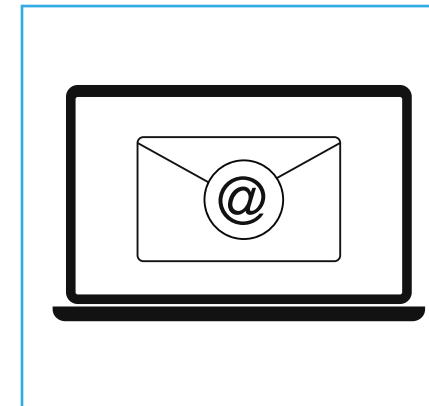


Repeat step 5e. on other side

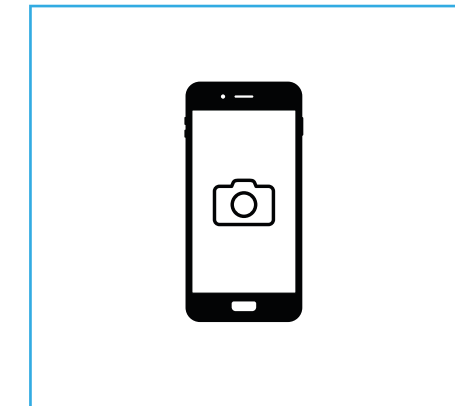


Repeat steps 5e-f

6



OR

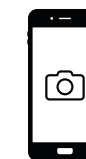


Questions or Concerns?

If you have any questions or concerns during installation, please contact us by phone or email.

To help us provide you with the best customer service possible, please snap a photo of the area in question and email it to us at info@TopDek.com

7



Showcase Your TopDek!

We are proud to provide you with top quality marine flooring and would love to see your finished product! Please email us a photo of your new TopDek to be featured on our social media channels.

E-mail photos to info@topdek.com

Please include your boat make and model in the email subject line.

TopDek